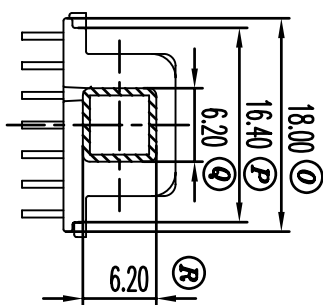
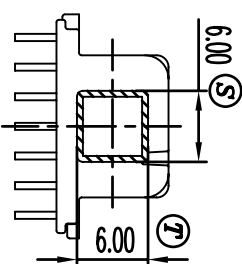


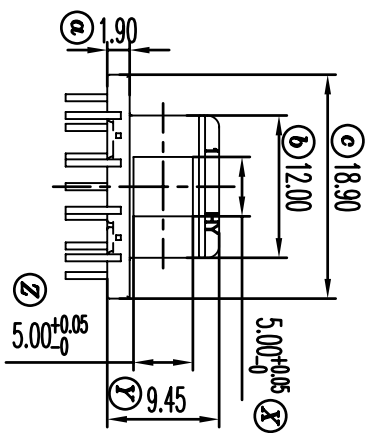
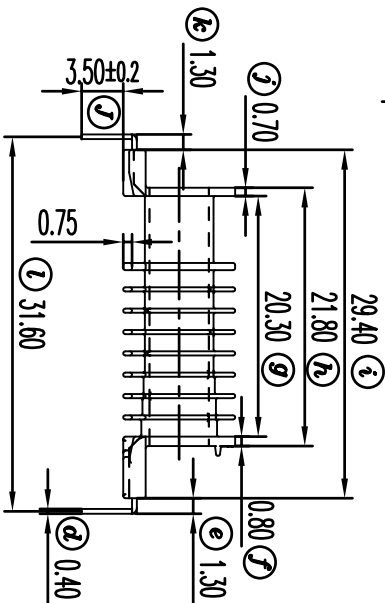
SECTION B-B



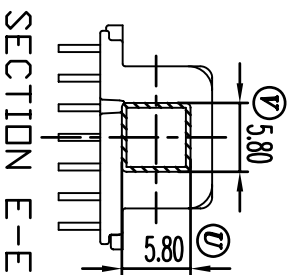
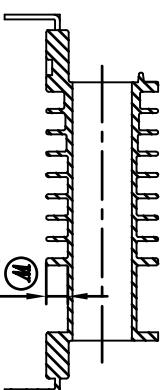
SECTION C-C



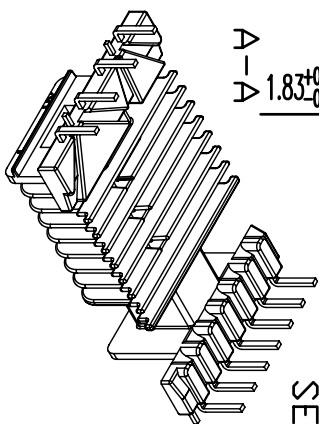
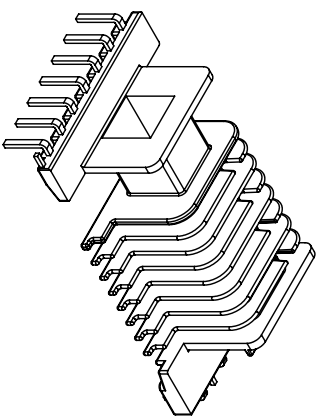
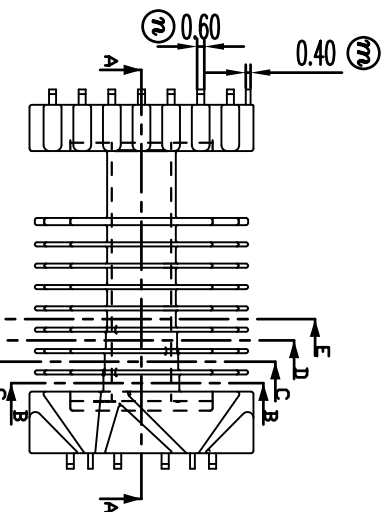
SECTION D-D



SECTION A-A



SECTION E-E



REV.	REVISION RECORD	DATE	REV.	REVISION RECORD	DATE
A			C		
B			D		

NAME	EEI-19-4(SW/DL形PIN) (1LP)	MATERIAL	LC(P/E4008)	SCALE	2/1	ANGLE	±1°
DRAWING NO.	HY S1910	PIN MATERIAL	PHOSPOR BRONZE	UNIT	m/m	REV.:	A
UL REC.34V-0	PIN TENION LOAD: 0.8kg	MIN					
TOLERANCES	0<k<10±0.1	10<k<20±0.15	20<k<40±0.2				
	PIN PITCH:±0.2	WALL THICKNESS:±0.05					

信詠塑膠工業股份有限公司 Hsin Ying Plastic Industrial Co., Ltd. TEL:886-2-29953711 FAX:86-2-29990010 信詠塑膠電子廠 Hsin Ying Elastic Electronics Factory TEL:07-69-86632011 FAX:07-69-86635843	