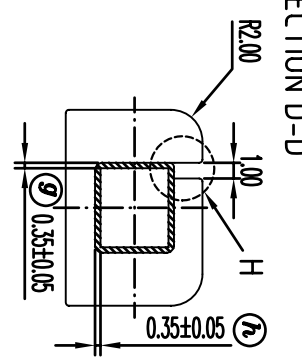
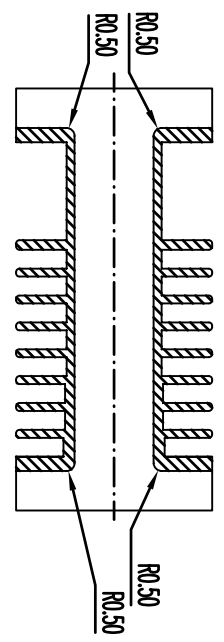


SECTION B-B



SECTION A-A



SECTION C-C

REV.	REVISION RECORD	DATE	REV.	REVISION RECORD	DATE
A			C		
B			D		

NAME	EEL-19SMD(背PIN) (9P)	MATERIAL	LCR(E4008)	SCALE	2/1	ANGLE	±1°
DRAWING NO.	HY S1903-2	PIN MATERIAL	PHOSPHOR BRONZE	UNIT	m/m	REV.:	A
UL REC.34V-0	PIN TENION LOAD: 0.8kg	MIN					
TOLERANCES	0<L<10±0.1 10<L<20±0.15 20<L<40±0.2						
	PIN PITCH:±0.2 WALL THICKNESS:±0.05						

信詠塑膠工業股份有限公司  
HSIN YING PLASTIC INDUSTRIAL CO. LTD  
TEL:886-2-29953711 FAX:86-2-29990010  
信詠塑膠電子廠  
HSIN YING PLASTIC ELECTRONICS FACTORY  
TEL:07-69-6632011 FAX:07-69-6633843