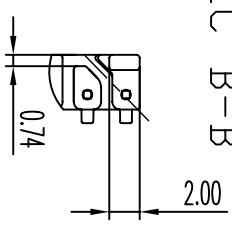


SEC A-A

SEC B-B



SEC C-C

detail E

說明  
 1> 益仕教要求2.10不插pin, 拉力為1.5kg, 焊錫條件: 420±10°C/2s (待確定).  
 2> pin材質: 磷青銅0.5\*0.5  
 3> 允許毛邊最大0.05mm.

REV.	REVISION RECORD	DATE	REV.	REVISION RECORD	DATE
A			C		
B			D		

NAME	EE-16-21(14P)	MATERIAL	PM9630	SCALE	2/1	ANGLE:	±1°
DRAWING NO.	HY1632	PIN MATERIAL	PHSPRBR BRONZE	UNIT	m/m	REV.:	A
UL REC.	94W-0	PIN TENION LOAD:	1.5kg MIN				
TOLERANCES	0<L<6:±0.1 6<L<30:±0.2 30<L<120:±0.3						
	PIN PITCH:±0.2 WALL THICKNESS:±0.15						

		信詠塑膠工業股份有限公司 Hsin-Yong Plastic Electronics Factory TEL: 886-2-29959711 FAX: 886-2-29990010 Hsin-Yong Plastic Electronics Factory TEL: 886-2-29959711 FAX: 886-2-29990010	
--	--	--	--